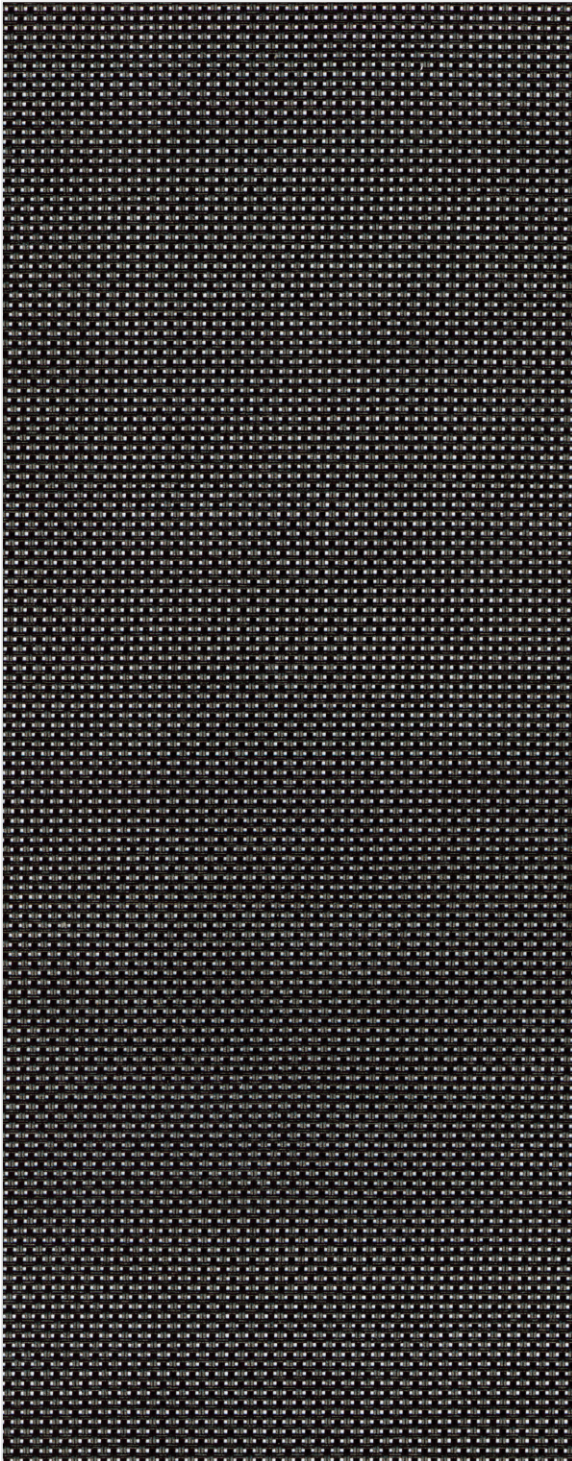
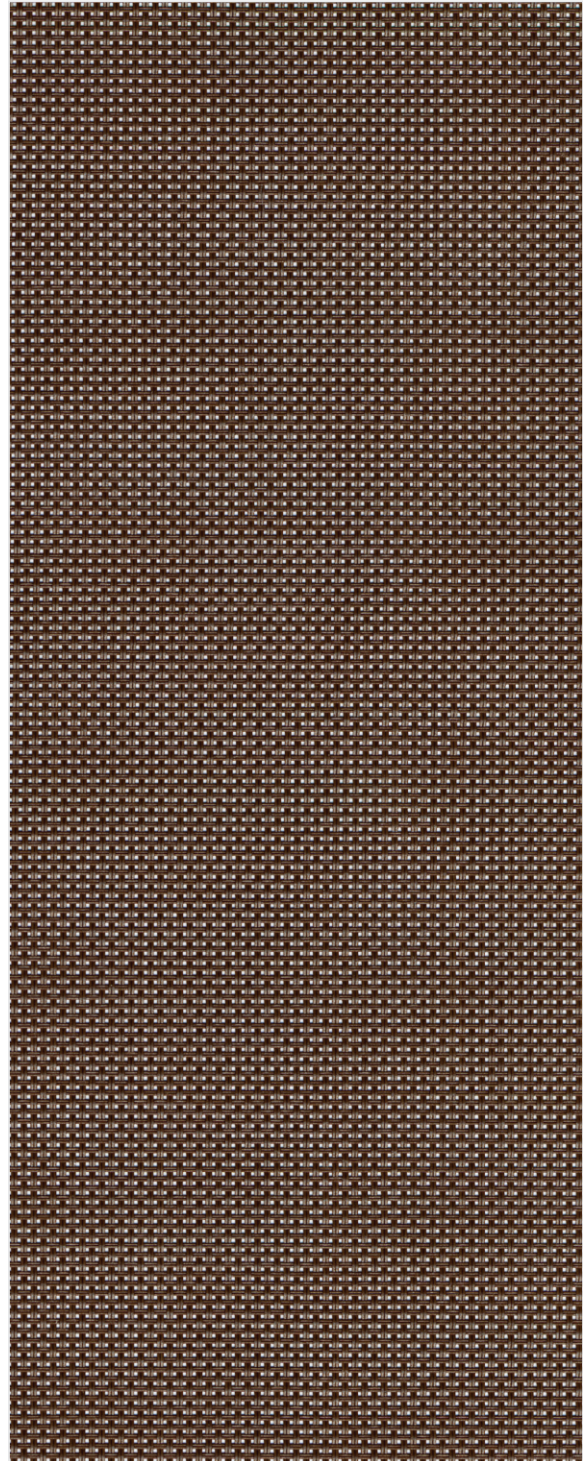


Exterior Sun Control Fabrics

PHIFER
SUPER SOLAR
SCREENING+
THE ULTIMATE IN SHADING PROTECTION



Charcoal



Bronze

Super Solar Screening +



Specifications

■ Phifer Super Solar Screening + offers the ultimate in shading protection by blocking up to 90% of the sun's heat. This vinyl-coated fiberglass fabric also improves daytime privacy while offering excellent outward visibility. Phifer Super Solar Screening works whether windows are open or closed. It keeps carpets and draperies from fading, as well as helps save energy.

Environmental Certification: Certified to GREENGUARD and GREENGUARD Gold standards for low chemical emissions into indoor air during product usage

Lead Free: RoHS / Directive 2002/95/EC, US Consumer Product Safety Commission Section 101, ANSI/WCMA A100.1-2007 for lead content, and REACH (EC 1907/2006) compliant

Warranty: 10-year exterior

Standard Colors: Charcoal and Bronze

Standard Widths: 36" (91.4cm), 48" (121.9cm) and 84" (213.4cm); 60" (152.4cm) in Charcoal only

Standard Roll Length: 100 Linear Feet (30.48m)

Mesh Count: 40x40

Mesh Weight: 10.0 oz/yd² (283.5 g/m²)

Fabric Thickness (in): .018 (.457mm)

Openness Factor: Approximately 10%

UV Blockage: Approximately 90%

Breaking Strength (lb): 290 Warp, 215 Fill

Stiffness (mg): 200 Warp, 250 Fill



PRODUCT CERTIFIED FOR
LOW CHEMICAL EMISSION
UL.COM/GG
UL 2818



Solar Heat Control Properties of Phifer Super Solar Screening + Fabrics Installed Externally, Thirty-Degree Profile Angle

Color	* Solar Optical Properties			Shading Coefficient w/					
	TS	RS	AS	Single			Insulating		
				1/8CL	1/4CL	1/4HA	1/2CL	1CL	1HA
Charcoal	10	7	83	0.20	0.20	0.19	0.16	0.16	0.14
Bronze	15	9	76	0.24	0.24	0.23	0.20	0.19	0.17

Solar Heat Control Properties of Phifer Super Solar Screening + Fabrics Installed Externally, Seventy-Five-Degree Profile Angle

Color	* Solar Optical Properties			Shading Coefficient w/					
	TS	RS	AS	Single			Insulating		
				1/8CL	1/4CL	1/4HA	1/2CL	1CL	1HA
Charcoal	3	8	89	0.12	0.12	0.12	0.08	0.08	0.08
Bronze	6	13	81	0.13	0.13	0.13	0.09	0.09	0.09

* Performance evaluations conducted by Matrix, Inc., Mesa, Arizona.

TS = Solar Transmittance
RS = Solar Reflectance
AS = Solar Absorption

1/8 CL = 1/8" Clear Glass
1/4 CL = 1/4" Clear Glass
1/4 HA = 1/4" Heat Absorbing Glass
1/2 CL = 1/2" Clear Glass
1 CL = 1" Clear Glass
1 HA = 1" Heat Absorbing Glass

The solar optical properties are used to calculate the shading coefficient. The shading coefficient represents the percentage of solar heat gain that is transmitted to the interior through the glass and shading system. Darker colors provide maximum glare reduction and visibility. For complete technical information, test results, performance specifications and larger samples, contact our Sun Control Marketing Department.



P. O. BOX 1700 • TUSCALOOSA, ALABAMA 35403-1700 U.S.A.
PHONE: 205/345-2120 • TOLL FREE 1/800-221-5497
FAX: 205/391-0799 • www.phifer.com