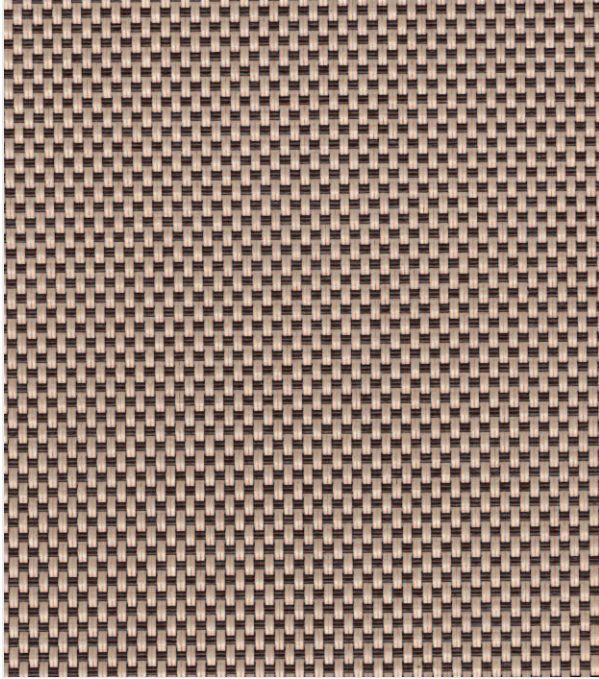
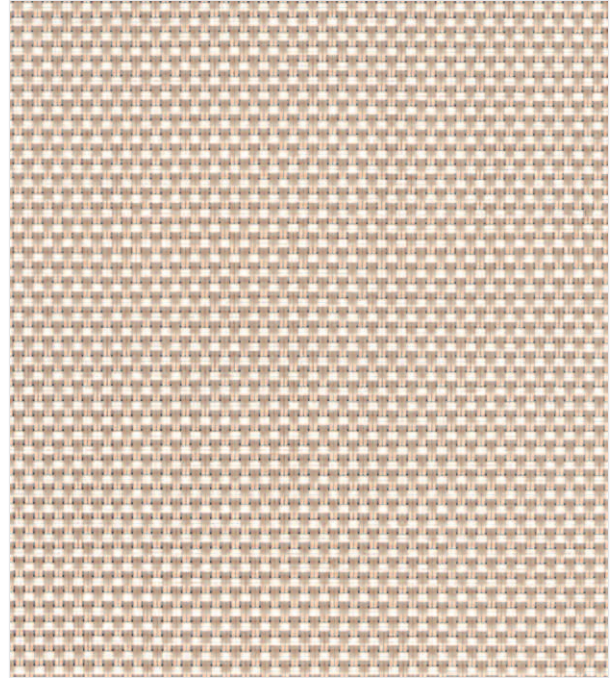


# Exterior Sun Control Fabrics

Phifer  
**SunTex® 95**  
Blocks up to 95% of the sun's rays



Mocha



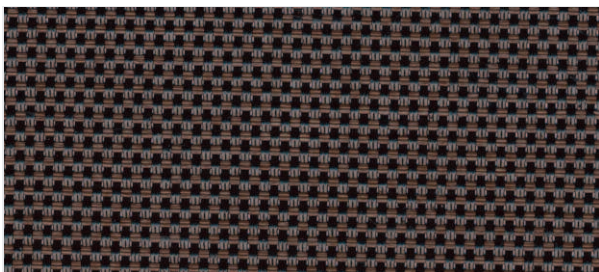
Alpaca



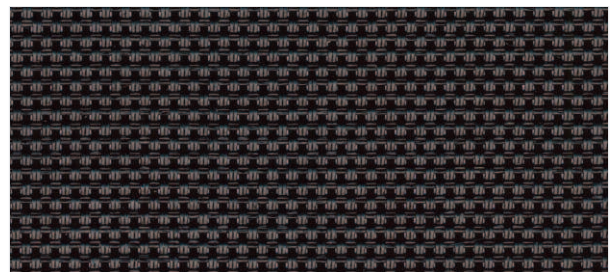
White



White/Grey



Dark Bronze



Black





## Specifications

■ SunTex 95, engineered for exterior roller shade applications, is a full basketweave vinyl-coated polyester fabric that is thinner and lighter weight than traditional SunTex. With a 5% openness factor, SunTex 95 offers increased heat and glare control as well as daytime privacy.

**Fire Classification:** California Technical Bulletin 117 Sect. E. Part 1, NFPA 101 (Class A Rating), and UBC (Class 1)

**Bacteria and Fungal Resistance:** ASTM E 2180, ASTM G21 and ASTM G22; includes Microban antimicrobial additives

**Environmental Certification:** GREENGUARD Certified, GREENGUARD Children and Schools Certified and GREENGUARD Select Certified for Home, Commercial, Healthcare and Education

**Lead Free:** RoHS / Directive 2002/95/EC, US Consumer Product Safety Commission Section 101, ANSI/WCMA A100.1-2007 for lead content, and REACH (EC 1907/2006) compliant

**Warranty:** 10-year exterior



Standard Widths: 126" (320cm)  
 Standard Roll Length: 90 Linear Feet (27.43m)  
 Mesh Weight: 15.4 (oz/yd<sup>2</sup>)  
 Fabric Thickness (in): .029

Openness Factor: Approximately 5%  
 UV Blockage: Approximately 95%  
 Breaking Strength (lb): 350 Warp, 235 Fill  
 Stiffness (mg): 520 Warp, 290 Fill

### Solar Heat Control Properties of Phifer SunTex 95 Exterior Use, Thirty-Degree Profile Angle

Color	* Solar Optical Properties				Shading Coefficient w/					
	TS	RS	AS	TV	Single			Insulating		
					1/8CL	1/4CL	1/4HA	1/2CL	1CL	1HA
Black	7	3	90	10	0.18	0.17	0.17	0.14	0.13	0.13
Dark Bronze	7	5	88	11	0.17	0.17	0.17	0.14	0.13	0.12
White	16	70	14	16	0.18	0.18	0.17	0.16	0.15	0.13
Mocha	6	22	72	9	0.15	0.14	0.14	0.11	0.11	0.10
White/Grey	11	54	35	12	0.15	0.15	0.14	0.13	0.13	0.11
Alpaca	10	39	51	11	0.16	0.16	0.15	0.13	0.13	0.12

### Solar Heat Control Properties of Phifer SunTex 95 Exterior Use, Seventy-Five-Degree Profile Angle

Color	* Solar Optical Properties				Shading Coefficient w/					
	TS	RS	AS	TV	Single			Insulating		
					1/8CL	1/4CL	1/4HA	1/2CL	1CL	1HA
Black	1	8	91	10	0.11	0.11	0.11	0.08	0.08	0.08
Dark Bronze	1	9	90	11	0.11	0.11	0.11	0.08	0.08	0.08
White	13	82	5	16	0.09	0.09	0.09	0.06	0.06	0.06
Mocha	2	26	72	9	0.10	0.10	0.10	0.07	0.07	0.07
White/Grey	7	66	27	12	0.08	0.08	0.08	0.05	0.05	0.05
Alpaca	6	50	44	11	0.09	0.09	0.09	0.06	0.06	0.06

\* Performance evaluations conducted by Matrix, Inc., Mesa, Arizona.

TS = Solar Transmittance      RS = Solar Reflectance  
 AS = Solar Absorptance      TV = Visual Transmittance  
 1/8 CL = 1/8" Clear Glass      1/4 CL = 1/4" Clear Glass  
 1/4HA = 1/4" Heat Absorbing Glass      1/2 CL = 1/2" Insulating Clear Glass  
 1 CL = 1" Insulating Clear Glass      1HA = 1" Insulating Heat Absorbing Glass



P. O. BOX 1700 • TUSCALOOSA, ALABAMA 35403-1700 U.S.A.  
 PHONE: 205/345-2120 • TOLL FREE 1/800-633-5955  
 FAX: 205/759-4450 • www.phifer.com

The solar optical properties are used to calculate the shading coefficient. The shading coefficient represents the percentage of solar heat gain that is transmitted to the interior through the glass and shading system. Darker colors provide maximum glare reduction and visibility. For complete technical information, current test results, performance specifications and larger samples, contact our Sun Control Marketing Department.

© PHIFER INCORPORATED V13 3030867  
 ® SunTex is a registered trademark of PHIFER INCORPORATED.  
 © GREENGUARD is a registered trademark of GREENGUARD Environmental Institute.  
 © MICROBAN is a registered trademark of Microban Products Company.